

ONC WORKFORCE TRAINING

TO EDUCATE HEALTH CARE PROFESSIONALS IN HEALTH IT

PROGRAM OVERVIEW

YEAR

1



UPDATE
HEALTH IT
TRAINING MATERIAL

YEAR

2



TRAIN

6,000

INCUMBENT
HEALTH CARE WORKERS

GRANTEES:

Bellevue College Columbia University
Normandale Community College John Hopkins University
Oregon Health and Science University Univ. of Alabama at Birmingham
Univ. of Texas Health Science Center at Houston

CLICK GRANTEE NAME TO VISIT WEBSITE

WHAT IS THE TRAINING ABOUT?

The current Health IT instructional training material needs to be updated to address four areas.

4 AREAS TO BE ADDRESSED



POPULATION HEALTH



NEW PAYMENT MODELS



VALUE-BASED & PATIENT
CENTERED CARE



CARE COORDINATION

WHO WILL BE TRAINED?

To meet the promise of better health care, better health, and lower costs through Health IT, **all levels of health professionals will require some level of training.**

TRAINING WILL BE PROVIDED TO



PHYSICIANS



PHARMACISTS



NURSES



HEALTH CARE
MANAGERS



FRONT DESK STAFF



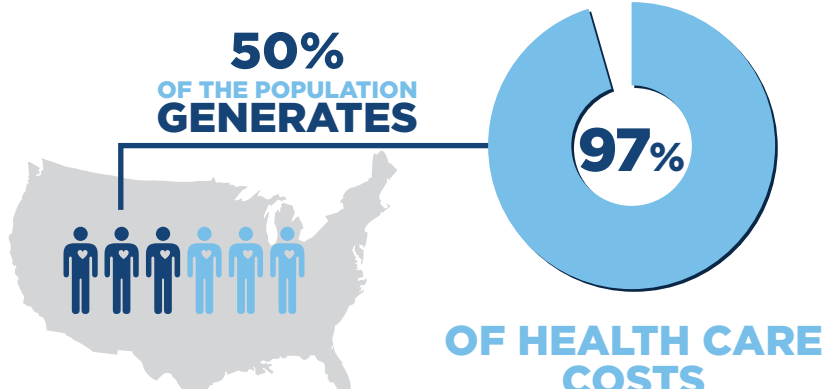
OTHER ALLIED
HEALTH PROFESSIONALS

WHY THESE FOUR TRAINING AREAS?

POPULATION HEALTH

POPULATION HEALTH MANAGEMENT HELPS:

- ▶ MITIGATE THE SOCIAL DETERMINANTS OF HEALTH BY ADDRESSING SOME OF THE PERSONAL, SOCIAL, ECONOMIC AND ENVIRONMENTAL FACTORS THAT IMPACT HEALTH STATUS
- ▶ REDUCE THE FREQUENCY OF COSTLY EMERGENCY DEPARTMENT VISITS AND HOSPITALIZATIONS BY FOCUSING ON PREVENTIVE AND PROACTIVE PRIMARY CARE
- ▶ LOWER THE COST OF CARE THROUGH DATA ANALYSIS AND TARGETED INTERVENTIONS



NEW PAYMENT MODELS

30%

OF PAYMENTS MADE VIA
ALTERNATIVE METHODS IN **2016**

50%

OF PAYMENTS MADE VIA
ALTERNATIVE METHODS BY **2018**

VALUE-BASED & PATIENT-CENTERED CARE

The health care system is moving toward **paying providers based on the quality of care rather than the quantity** of care they give their patients.

BY **2018** **90%** OF ALL MEDICARE FEE FOR SERVICE PAYMENTS ARE TIED TO QUALITY OR VALUE

Value-Based & Patient Centered Care Improves the Overall Patient Experience and Promotes Patient Engagement.

CARE COORDINATION

Lack of care coordination leads to:



MEDICATION ERRORS



UNNECESSARY PAIN &
SUFFERING FOR PATIENTS



HOSPITAL READMISSIONS



HIGHER COSTS

The Institute of Medicine has estimated:

**CARE COORDINATION
EFFORTS COULD
RESULT IN**



**\$240 BILLION
IN ANNUAL HEALTH CARE
SAVINGS**

VISIT:

WORKFORCE PROGRAMS